

MODEL 62001/62002

High Speed Letter Opener

Parts List & Diagram

ITEM	QTY.	PART NO.	DESCRIPTION	ITEM	QTY.	PART NO.	DESCRIPTION
1	1	W-A62000001	Housing Assy	51	1	W-O62000162	Plate Deflector
2	1	W-O62000007	Upright Frame, Right	52	1	W-O62001310	Main Shaft
3	1	W-O62000006	Upright Frame, Left	53	4	M-S008121	1/8" Nylon Washer
4	1	W-O62000011	Horizontal Frame	54	2	M-S019080	Nylon Shoulder Spacer
5	1	W-O62000012	Vertical Frame	55	1	M-S006030	Shoulder Bolt 3/8" x 1"
6	1	W-O6200071	Small Blade	56	2	M-S006006	Shoulder Bolt 1/4" x 1"
7	2	M-S62000073	3-8x16 L.H. Hex Nut	57	1	M-S62000046	Shoulder Bolt 3/8" x 1.25"
8	1	M-O62000077	Shaft Spacer	58	1	M-S019070	1/16" Nylon Washer
9	1	W-O62000063	Shaft Spring	59	1	W-O62001311	Rear Guide
10	1	W-N62000086	Knife Back-Up Disc	60	1	W-O62001206	Front Deck
11	1	W-O6200087	Large Blade	61	1	W-O62001023	Exciter Pulley
12	1	M-S010003	Ext. Retaining Ring	62	1	W-O62001022	Double Pulley
13	2	M-S008022	Wave Washer	63	1	W-O62001021	Drive Pulley
14	1	W-O62000064	Lower Knife Guard	64	2	W-O62001005	Obround Washer
15	1	W-O62001096	Rear Deck	65	1	W-O62001141	Feed Stop Plate
16	1	W-O62000126	Scrap Chute	66	1	W-O62001001	Feed Roller Cover
17	1	W-A62000015	Front Deck Mount Brkt	67	3	W-O62001002	Feed Roller Arm
18	5	M-S008012	1/4" Washer	68	3	W-O62001003	Feed Roller
19	1	M-S63751547	Control Knob	69	6	M-S023061	#116 EPDM O-Ring
20	1	W-A62000186	Rear Panel	70	6	M-S007120	6-32 Nylon Locknut
21	1	W-A62000709	Shaft Housing Assy	71	3	M-S031029	Extension Spring
22	4	M-S62000052	Shaft Bearing	72	1	W-O62001004	Retarder Plate
23	1	M-O62000061	Adjustment Shaft	73	2	M-O162811	Exciter
24	1	W-O62000053	Adjustable Shaft Bushing	74	1	M-S031075	Compression Spring
25	1	W-O62000072	Small Shaft	75	2	M-O62000258	Feed Belt, 62001
26	1	W-O62000251	Idler Brkt	76	2	M-S023046	#214 Silicone O-Ring
27	1	W-O62000254	Interlock Switch Brkt	77	1	M-S037020	115V USA Cord Set
28	1	M-S033067	Micro Switch	78	1	M-S032078	10-32 Thumb Knob
29	5	M-O62000179	Cable Clip	79	4	M-S030045	Rubber Foot, Screw On
30	4	M-S035036	Motor Grommet	80	4	M-S61000039	Rubber Foot, Stick-On
31	2	W-I62000250	Motor Brkt	81	1	M-S037094	4" Plastic Fan Blade
32	1	W-O62000017	Support Tie Bar	82	4	M-S004085	Phillips Pan Head Screw
33	1	W-O62000016	Motor Mount	83	1	W-A022021	Cut Shaft Pulley Assy
34	1	W-O62000255	Chad Diverter	84	1	M-S045101	Capacitor 20uF/ 220V
35	1	M-S013053	Idler Bushing	85	1	M-S015091	Martin Yale Label
36	1	M-O095204	Bushing Retainer	86	1	M-S62000088	Spacer Bushing
37	1	M-S003048	10-32 x 1.5" SHCS				
38	1	M-S021064	110V AC Motor				
39	1	M-S045231	Fuse Holder				
40	1	M-S63601106	Fuse, 5 Amp 110V				
41	1	W-A62000121	Front Cover				
42	1	W-A62000156	Front Panel				
43	1	M-S033053	On/Off Rocker Switch				
44	1	M-S022125	24 Tooth XL Pulley				
45	1	M-S025057	204 Tooth XL Belt				
46	1	M-S62000163	Operating Instructions Label				
47	1	M-S62000164	Dial Cut Decal				
48	1	M-S035015	Strain Relief				
49	1	W-A62000221	Catcher Assy				
50	1	W-A62000226	Scrap Bin				

Replacement parts for Model 62002 220V same except for:

38	1	M-S021065	CV7 AC Motor 220V
77	1	M-S037286	European Cord Set
84	1	M-S045249	6mf Motor Cap

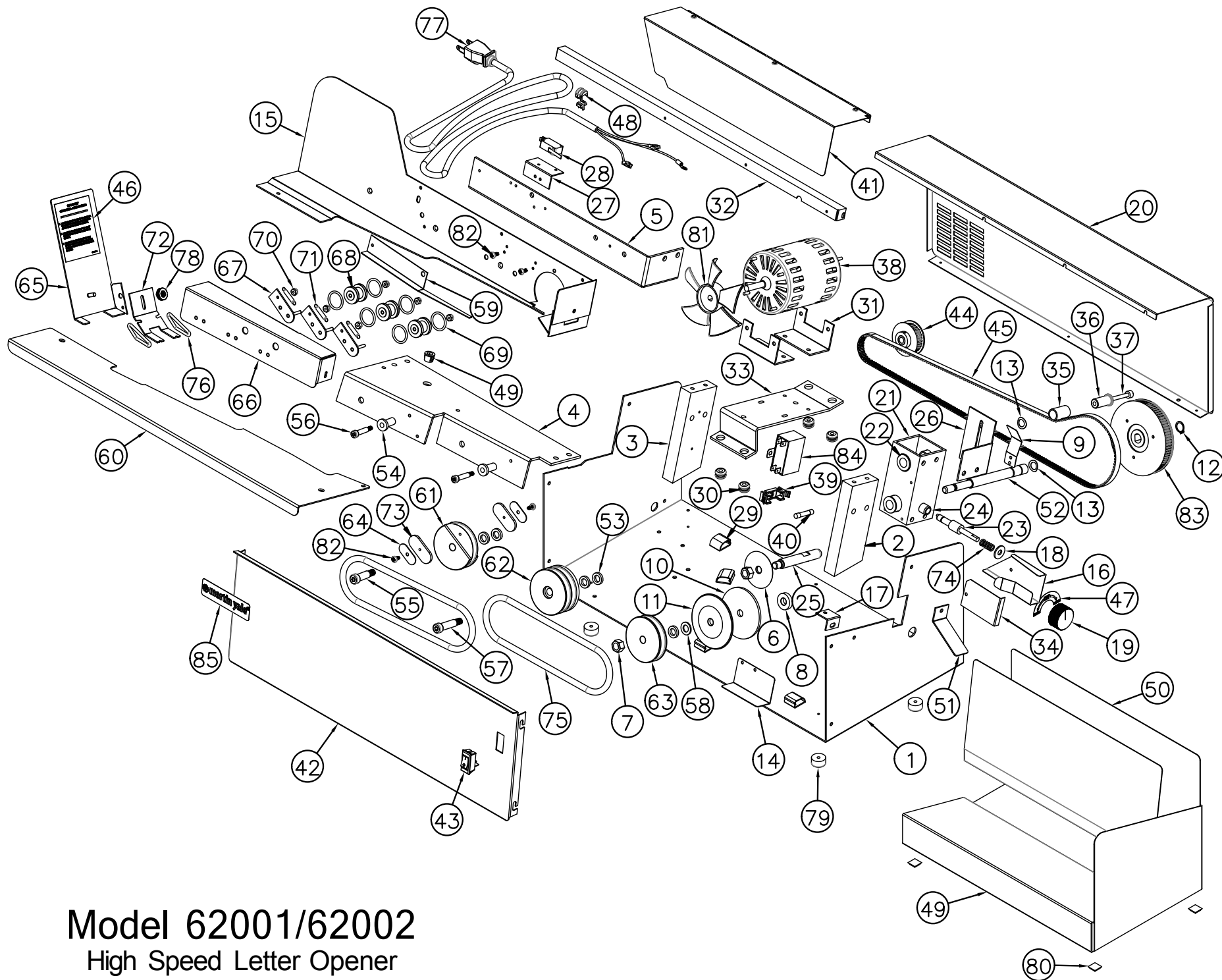
***Replacement parts for the Model 62002 220V machine may vary in appearance from the parts illustrated in the diagram**



251 Wedcor Avenue • Wabash, IN 46992

Phone: 260/563-0641 • FAX: 260/563-4575

website: www.martinyale.com • email: info@martinyale.com



Model 62001/62002
High Speed Letter Opener